

Hedge Trimmer 1.5-8t / 3,300-17,600lbs

T150

The T150 hedge trimmer is perfectly adapted to excavators from 1.5t / 3,300lbs up to 8t / 17,600lbs operating weight and skid-steer loaders. Thanks to the robust attachment, the hedges and bushes can be cut faster, more precisely and efficiently.



- ▷ High performance, robust design and low maintenance.
- ▷ Fast change from left to right.
- ▷ Cuts branches up to 40mm / 1.5in.
- ▷ Exchangeable teeth.
- ▷ Ready for work delivery - including hydraulic hoses and quick couplings.
- ▷ Optional: 1m / 39.3in extension to a full length of 2.5m / 98.4in.
- ▷ Mounting options: double pin suspension for excavator or adapter frame for skid-steer loader.
- ▷ Three different motors available.

Hedge Trimmer T150

Type	Operating weight (t/lbs)	Cutting length (mm/in)	Weight (kg/lbs)	Ø-Clippings max. (mm/in)	Motor (cc)	Flow* (l/min/GPM)	Operating pressure max. (bar/psi)
T150-50	1.5 - 2.5 / 3,300 - 5,500	1,500 / 59	86 / 189.2	25 / 1.0	50	30 - 48 / 7.5 - 12.7	150 - 220 / 2,160 - 3,190
T150-80	2.5 - 4.5 / 5,500 - 9,900	1,500 / 59	87 / 191.4	40 / 1.5	80	40 - 68 / 10.5 - 18.0	150 - 220 / 2,160 - 3,190
T150-100	4.5 - 8 / 9,900 - 17,600	1,500 / 59	88 / 193.6	40 / 1.5	100	50 - 71 / 13.2 - 18.7	150 - 220 / 2,160 - 3,190

Package consists of: hedge trimmer, hydraulic hoses and quick couplings

* when using a T150 Ext extension the flow must be 45 l/min / 11.9 GPM minimum

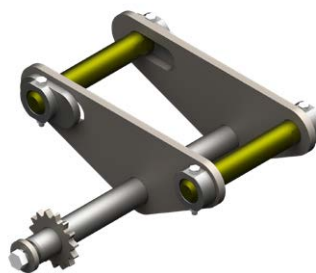
Accessories

Type	Description
T150 Ext	extension, cutting length: 1,000mm/39.3in, total length: 1,058mm/41.6in, weight: 26kg/57.2lbs
KSW01-T150	adapter for system L-Lock KMS01L/KHS01L for T150 - up to 2t/4,400lbs
KSW03-T150	adapter for system L-Lock KMS03L/KHS03L for T150 - up to 6t/13,200lbs
KSW08-T150	adapter for system L-Lock KMS08L/KHS08L for T150 - up to 12t/26,400lbs

Adapter for excavator mounting or directly with **nox** Tiltrotator available on request



extension



adapter for use on excavator

Request? exc@kinshofer.com