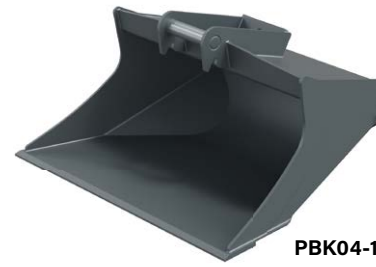


The PBK grading buckets are ideal for all types of grading and leveling work and are very robust with a low weight thanks to the use of HB 400 steel. These properties make the bucket an efficient and profitable tool.

Depending on the type, the bucket is suitable for excavators with an operating weight of up to 12t / 26,400lbs.

- ▷ **Robust:** low wear.
- ▷ **Easy mounting** to the carrier.
- ▷ **Different adapters** available.
- ▷ **No protruding parts.**



PBK04-110

Request? buc@kinshofer.com

Grading Buckets PBK

Type	Volume ISO 7451 (m ³ /yd ³)	Width (mm/in)	Weight (kg/lbs)	Adapter type	Operating weight (t/lbs)
PBK01-080-S30	0,06 / 0,078	800 / 31,4	60 / 132	S30	0,5-1 / 1,100-2,200
PBK01-080-KSW01	0,06 / 0,078	800 / 31,4	62 / 136	KSW01	0,5-1 / 1,100-2,200
PBK02-090-S30	0,09 / 0,11	900 / 35,4	67 / 147	S30	1,0-1,8 / 2,200-3,960
PBK02-090-KSW01	0,09 / 0,11	900 / 35,4	69 / 152	KSW01	1,0-1,8 / 2,200-3,960
PBK03-100-S40	0,12 / 0,15	1,000 / 39,3	107 / 235	S40	1,8-2,6 / 3,960-5,720
PBK03-100-KSW03	0,12 / 0,15	1,000 / 39,3	108 / 237	KSW03	1,8-2,6 / 3,960-5,720
PBK04-110-S40	0,16 / 0,21	1,100 / 43,3	131 / 288	S40	2,6-3,5 / 5,720-7,700
PBK04-110-KSW03	0,16 / 0,21	1,100 / 43,3	132 / 290	KSW03	2,6-3,5 / 5,720-7,700
PBK05-120-S40	0,25 / 0,32	1,200 / 47,2	174 / 383	S40	3,5-5,0 / 7,700-11,000
PBK05-120-KSW03	0,25 / 0,32	1,200 / 47,2	175 / 385	KSW03	3,5-5,0 / 7,700-11,000
PBK06-120-S40	0,3 / 0,39	1,200 / 47,2	191 / 420	S40	4,5-6,0 / 9,900-13,200
PBK06-120-S45	0,3 / 0,39	1,200 / 47,2	199 / 438	S45	4,5-6,0 / 9,900-13,200
PBK06-120-KSW03	0,3 / 0,39	1,200 / 47,2	191 / 420	KSW03	4,5-6,0 / 9,900-13,200
PBK08-130-S45	0,36 / 0,47	1,300 / 51,2	262 / 576	S45	5,5-8,5 / 12,100-18,700
PBK08-130-S50	0,36 / 0,47	1,300 / 51,2	262 / 576	S50	5,5-8,5 / 12,100-18,700
PBK08-130-KSW08	0,36 / 0,47	1,300 / 51,2	262 / 576	KSW08	5,5-8,5 / 12,100-18,700
PBK12-150-S45	0,5 / 0,65	1,500 / 59,1	354 / 779	S45	10,0-12,0 / 22,000-26,400
PBK12-150-S50	0,5 / 0,65	1,500 / 59,1	354 / 779	S50	10,0-12,0 / 22,000-26,400
PBK12-150-KSW08	0,5 / 0,65	1,500 / 59,1	361 / 794	KSW08	10,0-12,0 / 22,000-26,400

Package consists of: grading bucket, adapter

Adapters of other manufacturers on request.



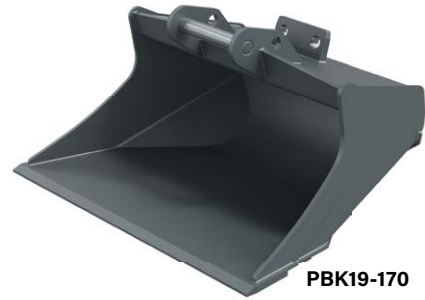
PBK04-110



The PBK grading buckets are ideal for all types of grading and leveling work and are very robust with a low weight thanks to the use of HB 400 steel. These properties make the bucket an efficient and profitable tool.

Depending on the type, the bucket is suitable for excavators with an operating weight of up to 35t / 77,000lbs.

- ▷ **Robust:** low wear.
- ▷ **Easy mounting** to the carrier.
- ▷ **Different adapters** available.
- ▷ **No protruding parts.**



PBK19-170

Request? exc@kinshofer.com

Grading Buckets PBK

Type	Volume ISO 7451 (m³/yd³)	Width (mm/in)	Weight (kg/lbs)	Adapter type	Operating weight (t/lbs)
PBK15-160-S60	0.7 / 0.92	1,600 / 62.9	480 / 1,056	S60	10-15 / 22,000-33,000
PBK15-160-S65	0.7 / 0.92	1,600 / 62.9	495 / 1,089	S65	10-15 / 22,000-33,000
PBK15-160-KSW10	0.7 / 0.92	1,600 / 62.9	480 / 1,056	KSW10	10-15 / 22,000-33,000
PBK19-170-S60	0.9 / 1.17	1,700 / 66.9	660 / 1,452	S60	15-19 / 33,000-41,800
PBK19-170-S65	0.9 / 1.17	1,700 / 66.9	670 / 1,474	S65	15-19 / 33,000-41,800
PBK19-170-S70	0.9 / 1.17	1,700 / 66.9	695 / 1,529	S70	15-19 / 33,000-41,800
PBK19-170-S70/55	0.9 / 1.17	1,700 / 66.9	695 / 1,529	S70/55	15-19 / 33,000-41,800
PBK19-170-KSW10	0.9 / 1.17	1,700 / 66.9	660 / 1,452	KSW10	15-19 / 33,000-41,800
PBK23-180-S70	1.15 / 1.5	1,800 / 70.8	830 / 1,826	S70	19-23 / 41,800-50,000
PBK23-180-S70/55	1.15 / 1.5	1,800 / 70.8	830 / 1,826	S70/55	19-23 / 41,800-50,000
PBK23-180-KSW21	1.15 / 1.5	1,800 / 70.8	800 / 1,760	KSW21	19-23 / 41,800-50,000
PBK28-200-S70	1.8 / 2.35	2,000 / 78.7	1,160 / 2,552	S70	23-28 / 50,600-61,600
PBK28-200-S70/55	1.8 / 2.35	2,000 / 78.7	1,160 / 2,552	S70/55	23-28 / 50,600-61,600
PBK28-200-S80	1.8 / 2.35	2,000 / 78.7	1,190 / 2,618	S80	23-28 / 50,600-61,600
PBK28-200-KSW21	1.8 / 2.35	2,000 / 78.7	1,182 / 2,600	KSW21	23-28 / 50,600-61,600
PBK35-220-S70	1.8 / 2.35	2,200 / 86.6	1,665 / 3,663	S70	26-35 / 57,200-77,000
PBK35-220-S70/55	1.8 / 2.35	2,200 / 86.6	1,665 / 3,663	S70/55	26-35 / 57,200-77,000
PBK35-220-S80	1.8 / 2.35	2,200 / 86.6	1,700 / 3,740	S80	26-35 / 57,200-77,000
PBK35-220-KSW21	1.8 / 2.35	2,200 / 86.6	1,620 / 3,564	KSW21	26-35 / 57,200-77,000

Package consists of: grading bucket, adapter

Adapters of other manufacturers on request.



PBK19-170