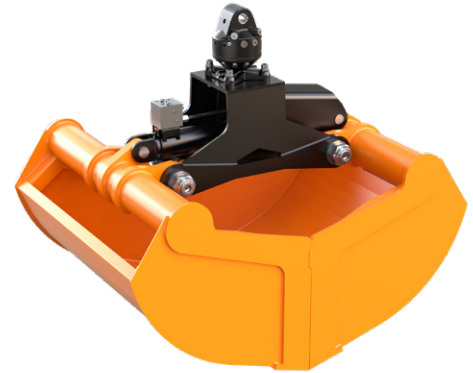


The high volume clamshell bucket KM 622 is the ideal tool for efficient handling tasks with your truck crane.

- ▷ **Compact design** due to the narrow frame enables manual filling of the bucket without obstacles.
- ▷ **Practically no „left overs“** of the material to be picked up as the working edges are vertical when the buckets are open and allow a deep plunge into a pile of material.
- ▷ **High stability** through reinforced buckets, torsion-free frame, generously dimensioned bearing system and the use of 500 HB steel in the manufacture of cutting edges.
- ▷ **Combination of compensator mechanism and cylinder guard** has many advantages: parallel action, longer life for piston rod and seals, significant weight savings.
- ▷ **Efficient handling** with high closing forces (4,400 lbf at an operating pressure of 3,750 psi).



#### Package high volume clamshell bucket KM 622-400 c & KM 622-500 c

Type	Volume (c.y.)	Width B (in)	Opening max. (in)	Number of teeth (optional)	Self weight (lbs)	Closing force (lbf)	Load capacity (lbs)
KM 622-400 c	0.52	32	66	9	836	4,400	6,600
KM 622-500 c	0.65	39	66	9	891	4,400	6,600

**Package consists of:** high volume clamshell bucket (w/o teeth), rotator KM 04 F, short connecting hoses KM 203 01, upper suspension KM 501 4500, non-return valve

#### High volume clamshell bucket KM 622

Type	Volume (c.y.)	Width B (in)	Opening max. (in)	Number of teeth (optional)	Self weight (lbs)	Closing force (lbf)	Load capacity (lbs)
KM 622-300	0.39	25	66	5	693	4,400	6,600
KM 622-400	0.52	32	66	9	759	4,400	6,600
KM 622-500	0.65	39	66	9	814	4,400	6,600

#### Accessories

Type	Description
KM 04 F	recommended KINSHOFER rotator for KM 622
KM 685 06 eye set 2	welded eyes
KM 685 07 set	wear plates to protect horizontal cutting edges (2 pieces)

#### Requirements of truck crane

**Operating pressure:** 3,750 - 5,350 psi  
**Recommended oil flow:** 9 - max. 20 GPM

**Pump capacity/Operating pressure**  
 > 10.56 GPM / 3744 psi  
 ≤ 10.56 GPM / 4608 psi

#### Technical drawings

