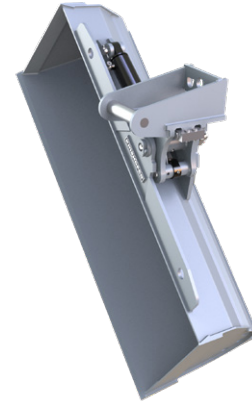


The hydraulically driven tilt bucket with horizontal cylinder is ideal for all daily works in general construction. With a tilt angle of 90° (2 x 45°) it is perfect for levelling and grading as well as for the construction of trenches, skips and slopes.

The weld-on quick change adapter is compatible to the system L-Lock. Other adapters on request.



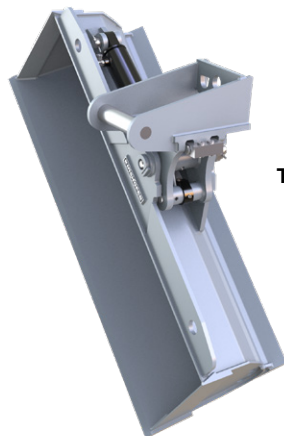
TB05L

- ▷ Simple and **robust design**.
- ▷ **Rear cutting edge by default**.
- ▷ **Cylinder with piston rod protection**.
- ▷ **2 x 45° tilt angle**.
- ▷ **Low maintenance** thanks to long-time grease filling in the tilt bearing.
- ▷ Long bucket base for **easy penetration and high excavating capacity**.
- ▷ **Durable** thanks to robust design and use of highly resistant wearout steel. Cutting edges 500HB, bucket base 400HB.

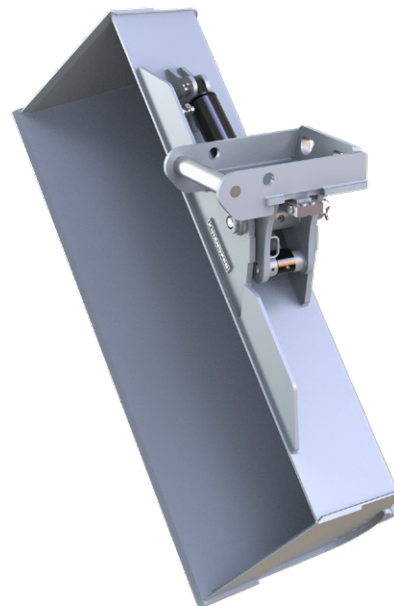
Tilt Bucket TB-L

Type	Tilt angle	Volume ISO 7451 (m³/yd³)	Cutting width (mm / in)	Weight (kg / lbs)	Adapter	Operating weight (t/lbs)
TB02L-085	2 x 45°	0.077 / 0.100	850 / 33.4	116 / 255.2	KSW01	1.0-1.8 / 2,200-3,960
TB02L-100	2 x 45°	0.092 / 0.120	1,000 / 39.3	132 / 290.4	KSW01	1.0-1.8 / 2,200-3,960
TB02L-120	2 x 45°	0.117 / 0.153	1,200 / 47.2	147 / 323.4	KSW01	1.0-1.8 / 2,200-3,960
TB03L-100	2 x 45°	0.092 / 0.120	1,000 / 39.3	137 / 301.4	KSW03	1.8-2.6 / 3,960-5,720
TB03L-120	2 x 45°	0.117 / 0.153	1,200 / 47.2	160 / 352	KSW03	1.8-2.6 / 3,960-5,720
TB05L-100	2 x 45°	0.150 / 0.196	1,000 / 39.3	150 / 330	KSW03	2.6-5.0 / 5,720-11,000
TB05L-120	2 x 45°	0.180 / 0.235	1,200 / 47.2	164 / 360.8	KSW03	2.6-5.0 / 5,720-11,000
TB05L-140	2 x 45°	0.210 / 0.274	1,400 / 55.1	178 / 391.6	KSW03	2.6-5.0 / 5,720-11,000
TB05L-150	2 x 45°	0.220 / 0.287	1,500 / 59	184 / 404.8	KSW03	2.6-5.0 / 5,720-11,000
TB06L-120	2 x 45°	0.200 / 0.261	1,200 / 47.2	170 / 374	KSW03	4.5-6.0 / 9,900-13,200
TB06L-140	2 x 45°	0.240 / 0.313	1,400 / 55.1	185 / 407	KSW03	4.5-6.0 / 9,900-13,200
TB06L-150	2 x 45°	0.260 / 0.340	1,500 / 59	195 / 429	KSW03	4.5-6.0 / 9,900-13,200
TB06L-160	2 x 45°	0.280 / 0.366	1,600 / 62.9	205 / 451	KSW03	4.5-6.0 / 9,900-13,200
TB08L-150	2 x 45°	0.290 / 0.379	1,500 / 59	350 / 770	KSW08	5.5-8.5 / 12,100-18,700
TB08L-160	2 x 45°	0.310 / 0.405	1,600 / 62.9	360 / 792	KSW08	5.5-8.5 / 12,100-18,700
TB08L-180	2 x 45°	0.350 / 0.457	1,800 / 70.8	380 / 836	KSW08	5.5-8.5 / 12,100-18,700
TB10L-150	2 x 45°	0.350 / 0.457	1,500 / 59	330 / 726	KSW08	8.0-10.0 / 17,600-22,000
TB10L-180	2 x 45°	0.420 / 0.549	1,800 / 70.8	390 / 858	KSW08	8.0-10.0 / 17,600-22,000
TB12L-160	2 x 45°	0.450 / 0.588	1,600 / 62.9	570 / 1254	KSW08	10.0-12.0 / 22,000-26,400
TB12L-180	2 x 45°	0.510 / 0.667	1,800 / 70.8	600 / 1320	KSW08	10.0-12.0 / 22,000-26,400

Package consists of: tilt bucket, rear cutting edge, KSW-adapter for L-Lock



TB03L



TB10L

Ditch Cleaning Buckets System L-Lock 10-23t / 22,000-50,600lbs

DC-L

The Ditch Cleaning Bucket is the perfect tool to excavate, load and backfill sand, gravel and soil. Ditch cleaning, grading and levelling of embankments and lawns as well as digging trenches, skips and slopes are other applications for the DC-L series. The integrated quick change adapter is adjusted to the system L-Lock. Other adapters on request.

- ▷ **Conical design** with narrowing by 2° on both sides.
- ▷ **Easy penetration and high excavating capacity.**
- ▷ For **more flexibility** best in combination **with a tiltable quick coupler.**
- ▷ **Durable** thanks to robust design and use of highly resistant wearout steel for the bucket base (400HB).



DC15L

Ditch Cleaning Buckets

Type	Volume ISO 7451 (m³/yd³)	Cutting width (mm/in)	Weight (kg/lbs)	Adapter	Operating weight (t/lbs)
DC15L-180	0.44 / 0.58	1,800 / 70.9	437 / 961	KSW10	10-15 / 22,000-33,000
DC15L-200	0.495 / 0.65	2,000 / 78.7	476 / 1,047	KSW10	10-15 / 22,000-33,000
DC19L-180	0.60 / 0.78	1,800 / 70.9	465 / 1,023	KSW10	15-19 / 33,000-41,800
DC19L-200	0.65 / 0.85	2,000 / 78.7	506 / 1,113	KSW10	15-19 / 33,000-41,800
DC23L-200	0.90 / 1.18	2,000 / 78.7	661 / 1,454	KSW21	19-23 / 41,800-50,600

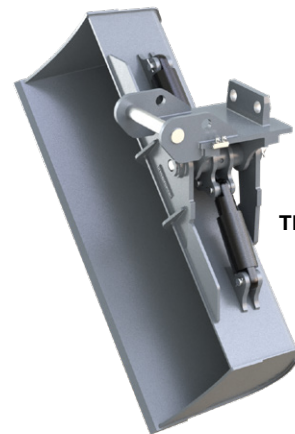
Package consists of: ditch cleaning bucket, KSW-adapter for L-Lock

Tilt Buckets System L-Lock 10-35t / 22,000-77,000lbs

TB-L

The hydraulically driven tilt bucket with horizontal cylinder is ideal for all daily works in general construction. With a tilt angle of 90° (2 x 45°) it is perfect for levelling and grading as well as for the construction of trenches, skips and slopes. The weld-on quick change adapter is compatible to the system L-Lock. Other adapters on request.

- ▷ **Drainage holes** on both sides.
- ▷ **Conical design** with narrowing by 2° on both sides.
- ▷ **Easy penetration and high excavating capacity.**
- ▷ **Durable** thanks to robust design and use of highly resistant wearout steel for the bucket base (400HB).



TB19L

Tilt Bucket

Type	Tilt angle	Volume ISO 7451 (m³/yd³)	Cutting width (mm/in)	Weight (kg/lbs)	Adapter	Operating weight (t/lbs)
TB15L-180	2 x 45°	0.44 / 0.58	1,800 / 70.9	599 / 1,318	KSW10	10-15 / 22,000-33,000
TB15L-200	2 x 45°	0.495 / 0.65	2,000 / 78.7	626 / 1,377	KSW10	10-15 / 22,000-33,000
TB19L-180	2 x 45°	0.60 / 0.78	1,800 / 70.9	627 / 1,379	KSW10	15-19 / 33,000-41,800
TB19L-200	2 x 45°	0.65 / 0.85	2,000 / 78.7	656 / 1,443	KSW10	15-19 / 33,000-41,800
TB19L-220	2 x 45°	0.70 / 0.92	2,200 / 86.6	694 / 1,527	KSW10	15-19 / 33,000-41,800
TB23L-200	2 x 45°	0.90 / 1.18	2,000 / 78.7	871 / 1,916	KSW21	19-23 / 41,800-50,600
TB23L-220	2 x 45°	1.00 / 1.31	2,200 / 86.6	915 / 2,013	KSW21	19-23 / 41,800-50,600
TB28L-200	2 x 45°	1.22 / 1.60	2,000 / 78.7	1,161 / 2,554	KSW21	23-28 / 50,600-61,600
TB35L-220	2 x 45°	1.43 / 1.87	2,200 / 86.6	1,550 / 3,410	KSW21	26-35 / 57,200-77,000

Package consists of: tilt bucket, KSW-adapter for L-Lock