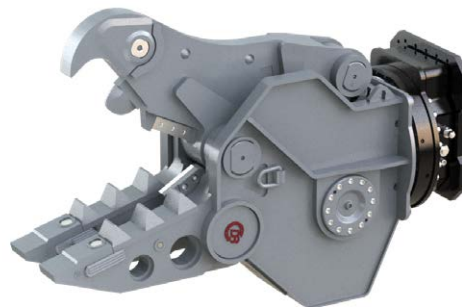


Rotating Shears up to 50t / 110,000lbs

DLC / DLD / DLP

The rotating demolition tools of the Dedicated Demolition Line have been developed for primary and secondary demolition. Their jaws are designed for each application area within a demolition job site:
Combi Shear DLC, Demolition Shear DLD or Pulveriser DLP.

- ▷ **Powerful cylinder** with robust pin suspension.
- ▷ **Cylinder** in two chamber technique with **speed valve**.
- ▷ **Rotation with additional oil passage**.
- ▷ Twin rotation motors for **extra rotation power**.
- ▷ **Swing bearing double pivoted**.
- ▷ **Rotation circuit filters**.
- ▷ **Teeth, shrouds and cutting blades exchangeable**.
- ▷ **Excellent speed/ power to weight ratio**.
- ▷ **DLP: exchangeable ground tooth-plate**.



DLD-25

Rotating Combi Shears DLC

Type	Operating weight	Weight	Jaw width A	Jaw depth E	Lower jaw width B	Upper jaw width C	Height D	Length blades	Closing force*
	(t/lbs)	(kg/lbs)	(mm/in)	(mm/in)	(mm/in)	(mm/in)	(mm/in)	(mm/in)	(t/lbs)
DLC-25	18 - 25 / 39,600 - 55,000	1,880 / 4,136	785 / 30.9	800 / 31.5	390 / 15.4	90 / 3.5	1,995 / 78.5	400 / 15.7	70/100 / 154,000/220,000
DLC-30	22 - 35 / 48,400 - 77,000	2,455 / 5,401	875 / 34.4	900 / 35.4	455 / 17.9	100 / 3.9	2,150 / 84.6	400 / 15.7	80/125 / 176,000/275,000
DLC-45	32 - 50 / 70,400 - 110,000	3,085 / 6,787	980 / 38.6	990 / 39.0	470 / 18.5	100 / 3.9	2,365 / 93.1	500 / 19.7	110/150 / 242,000/330,000

Rotating Demolition Shears DLD

Type	Operating weight	Weight	Jaw width A	Jaw depth E	Lower jaw width B	Upper jaw width C	Height D	Length blades	Closing force*
	(t/lbs)	(kg/lbs)	(mm/in)	(mm/in)	(mm/in)	(mm/in)	(mm/in)	(mm/in)	(t/lbs)
DLD-25	18 - 25 / 39,600 - 55,000	1,905 / 4,191	825 / 32.5	800 / 31.5	390 / 15.4	90 / 3.5	2,035 / 80.1	200 / 7.9	75/125 / 165,000/275,000
DLD-30	22 - 35 / 48,400 - 77,000	2,450 / 5,390	870 / 34.3	885 / 34.8	450 / 17.7	100 / 3.9	2,155 / 84.8	200 / 7.9	85/135 / 187,000/297,000
DLD-45	32 - 50 / 70,400 - 110,000	3,110 / 6,842	990 / 39.0	945 / 37.2	470 / 18.5	100 / 3.9	2,360 / 92.9	200 / 7.9	110/160 / 242,000/252,000

Rotating Pulveriser DLP

Type	Operating weight	Weight	Jaw width A	Jaw depth E	Lower jaw width B	Upper jaw width C	Height D	Length blades	Closing force*
	(t/lbs)	(kg/lbs)	(mm/in)	(mm/in)	(mm/in)	(mm/in)	(mm/in)	(mm/in)	(t/lbs)
DLP-25	18 - 25 / 39,600 - 55,000	1,920 / 4,224	790 / 31.1	800 / 31.5	390 / 15.4	325 / 12.8	2,035 / 80.1	200 / 7.9	70/100 / 154,000/220,000
DLP-30	22 - 35 / 48,400 - 77,000	2,425 / 5,335	860 / 33.9	885 / 34.8	450 / 17.7	350 / 13.8	2,155 / 84.8	200 / 7.9	80/125 / 176,000/275,000
DLP-45	32 - 50 / 70,400 - 110,000	3,150 / 6,930	985 / 38.8	945 / 37.2	470 / 18.5	400 / 15.7	2,360 / 92.9	200 / 7.9	110/150 / 242,000/330,000

* closing force measured at front tooth / splitting tooth

Rotating Shears - Technical Data

DLC / DLD / DLP
DRC / DRD / DRP

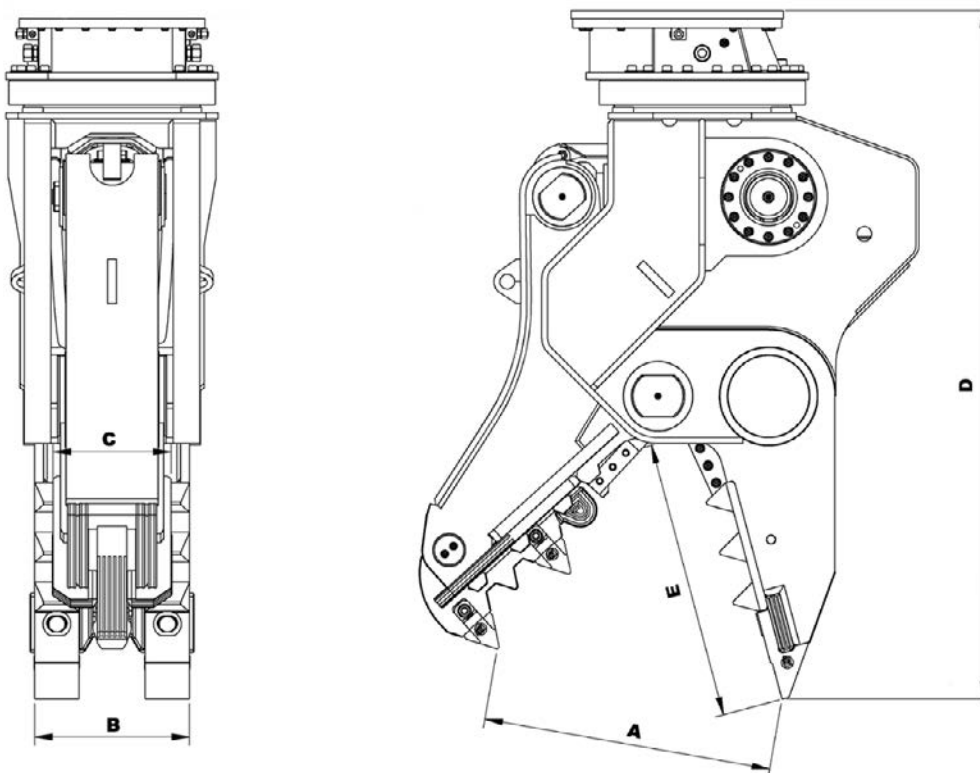
Hydraulics

Type	Pressure max. (bar/psi)	Open / close		Pressure max. (bar/psi)	Rotation		Cycle times (open / close) (sec)
		Flow (l/min/GPM)	Flow (l/min/GPM)		Flow (l/min/GPM)	Flow (l/min/GPM)	
DLC-25 / DLD-25 / DLP-25	380 / 5,510	120 - max. 200 / 31.7 - max. 52.8		140 / 2,030	40 - max. 60 / 10.6 - max. 15.9		2.5 / 2.5
DLC-30 / DLD-30 / DLP-30	380 / 5,510	150 - max. 250 / 39.6 - max. 66.1		140 / 2,030	40 - max. 60 / 10.6 - max. 15.9		2.5 / 2.5
DLC-45 / DLD-45 / DLP-45	380 / 5,510	200 - max. 300 / 52.8 - max. 79.3		140 / 2,030	40 - max. 60 / 10.6 - max. 15.9		2.6 / 2.9

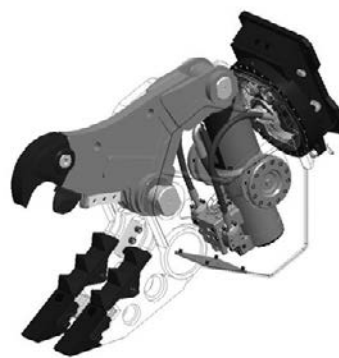
Hydraulics

Type	Pressure max. (bar/psi)	Open / close		Pressure max. (bar/psi)	Rotation		Cycle times (open / close) (sec)
		Flow (l/min)	Flow (l/min)		Flow (l/min)	Flow (l/min)	
DRC-25 / DRD-25 / DRP-25	380 / 5,510	120 - max. 200 / 31.7 - max. 52.8		140 / 2,030	40 - max. 60 / 10.6 - max. 15.9		2.0 / 2.3
DRC-30 / DRD-30 / DRP-30	380 / 5,510	150 - max. 250 / 39.6 - max. 66.1		140 / 2,030	40 - max. 60 / 10.6 - max. 15.9		2.0 / 2.5
DRC-45 / DRD-45 / DRP-45	380 / 5,510	200 - max. 300 / 52.8 - max. 79.3		140 / 2,030	40 - max. 60 / 10.6 - max. 15.9		2.0 / 2.9

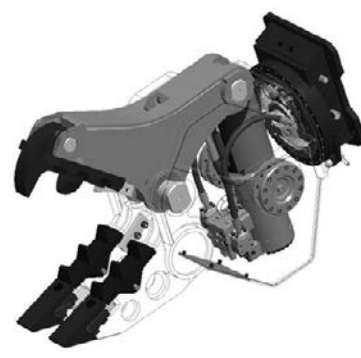
Technical drawing



Combi Shear



Demolition Shear



Pulveriser

Request? exc@kinshofer.com