

# Mounting options for Earth Drills up to 15t / 33,000lbs

## Single pin hitches



Type	for earth drills	with pin Ø (mm/in)	for operating weight (t/lbs)
KM 501-X1500-4500MAX-25	X1500 - 4500MAX	25 / 0.98	1 - 5 / 2,200 - 11,000
KM 501-X1500-4500MAX-30	X1500 - 4500MAX	30 / 1.18	1 - 5 / 2,200 - 11,000
KM 501-X1500-4500MAX-32	X1500 - 4500MAX	32 / 1.26	1 - 5 / 2,200 - 11,000
KM 501-X1500-4500MAX-35	X1500 - 4500MAX	35 / 1.38	1 - 5 / 2,200 - 11,000
KM 501-X1500-4500MAX-38	X1500 - 4500MAX	38 / 1.49	1 - 5 / 2,200 - 11,000
KM 501-X1500-4500MAX-40	X1500 - 4500MAX	40 / 1.57	1 - 5 / 2,200 - 11,000
KM 501-7000MAX-8000MAX-40	7000MAX / 8000MAX	40 / 1.57	4.5 - 8 / 9,900 - 17,600*
KM 501-7000MAX-8000MAX-44,5	7000MAX / 8000MAX	44,5 / 1.75	4.5 - 8 / 9,900 - 17,600*
KM 501-7000MAX-8000MAX-45	7000MAX / 8000MAX	45 / 1.77	4.5 - 8 / 9,900 - 17,600*
KM 501-7000MAX-8000MAX-50	7000MAX / 8000MAX	50 / 1.97	4.5 - 8 / 9,900 - 17,600*
KM 501-7000MAX-8000MAX-55	7000MAX / 8000MAX	55 / 2.17	4.5 - 8 / 9,900 - 17,600*
KM 501-7000MAX-8000MAX-60	7000MAX / 8000MAX	60 / 2.36	4.5 - 8 / 9,900 - 17,600*
KM 501-15000MAX-25000MAX-44,5	12000MAX / 15000MAX	44,5 / 1.75	8 - 22 / 17,600 - 48,400
KM 501-15000MAX-25000MAX-45	12000MAX / 15000MAX	45 / 1.77	8 - 22 / 17,600 - 48,400
KM 501-15000MAX-25000MAX-50	12000MAX / 15000MAX	50 / 1.97	8 - 22 / 17,600 - 48,400
KM 501-15000MAX-25000MAX-55	12000MAX / 15000MAX	55 / 2.17	8 - 22 / 17,600 - 48,400
KM 501-15000MAX-25000MAX-60	12000MAX / 15000MAX	60 / 2.36	8 - 22 / 17,600 - 48,400
KM 501-15000MAX-25000MAX-65	12000MAX / 15000MAX	65 / 2.56	8 - 22 / 17,600 - 48,400
KM 501-15000MAX-25000MAX-70	12000MAX / 15000MAX	70 / 2.76	8 - 22 / 17,600 - 48,400
KM 501-15000MAX-25000MAX-75	12000MAX / 15000MAX	75 / 2.95	8 - 22 / 17,600 - 48,400
KM 501-15000MAX-25000MAX-80	12000MAX / 15000MAX	80 / 3.15	8 - 22 / 17,600 - 48,400

\*and for backhoe loader

## Cardan link with system L-Lock



Type	for earth drills	w/adaptor	for operating weight (t/lbs)
KSW01-X1500	X1500	KSW01	1 - 2 / 2,200 - 4,400
KSW01-X2000	X2000	KSW01	1 - 2.5 / 2,200 - 5,500
KSW03-X2500	X2500	KSW03	1.5 - 3 / 3,300 - 6,600
KSW03-3000MAX	3000MAX	KSW03	2 - 4 / 4,400 - 8,800
KSW03-3500MAX	3500MAX	KSW03	2.5 - 4.5 / 5,500 - 9,900
KSW03-4500MAX	4500MAX	KSW03	3 - 5 / 6,600 - 11,000
KSW03-7000MAX	7000MAX	KSW03	5 - 7 / 11,000 - 15,400*
KSW08-7000MAX	7000MAX	KSW08	5 - 7 / 11,000 - 15,400*
KSW08-8000MAX	8000MAX	KSW08	6 - 8 / 13,200 - 17,600
KSW10-15000MAX	12000MAX / 15000MAX	KSW10	10 - 15 / 22,000 - 33,000

\*and for backhoe loader

## Cradle hitch with system L-Lock



Type	for earth drills	w/adaptor	for operating weight (t/lbs)
KSW01-X1500 Cradle	X1500	KSW01	1 - 2 / 2,200 - 4,400
KSW01-X2000 Cradle	X2000	KSW01	1 - 2.5 / 2,200 - 5,500
KSW03-X2500 Cradle	X2500	KSW03	1.5 - 3 / 3,300 - 6,600
KSW03-3000MAX Cradle	3000MAX	KSW03	2 - 4 / 4,400 - 8,800
KSW03-3500MAX Cradle	3500MAX	KSW03	2.5 - 4.5 / 5,500 - 9,900
KSW03-4500MAX Cradle	4500MAX	KSW03	3 - 5 / 6,600 - 11,000
KSW03-7000MAX Cradle	7000MAX	KSW03	5 - 7 / 11,000 - 15,400*
KSW08-7000MAX Cradle	7000MAX	KSW08	5 - 7 / 11,000 - 15,400*
KSW08-8000MAX Cradle	8000MAX	KSW08	6 - 8 / 13,200 - 17,600
KSW10-15000MAX Cradle	12000MAX / 15000MAX	KSW10	10 - 15 / 22,000 - 33,000

\*and for backhoe loader

## Lower part of hitch for specific solution



Type	for earth drills	for operating weight (t/lbs)
KM 691-X2000-8000MAX	X2000 - 8000MAX	1 - 8 / 2,200 - 17,600*
KM 691-15000MAX-25000MAX	12000MAX - 25000MAX	10 - 22 / 22,000 - 48,400

\*and for backhoe loader

## Lower part of cradle hitch for specific solution



Type	for earth drills	for operating weight (t/lbs)
KM 691-X2000-X2500 Cradle	X2000 - X2500	1.5 - 3 / 3,300 - 6,600
KM 691-3000MAX-4500MAX Cradle	3000MAX - 4500MAX	2 - 5 / 4,400 - 11,000
KM 691-7000MAX-8000MAX Cradle	7000MAX / 8000MAX	5 - 8 / 11,000 - 17,600*
KM 691-15000MAX Cradle	12000MAX / 15000MAX	10 - 15 / 22,000 - 33,000

\*and for backhoe loader

# Mounting options for Earth Drills

## Single pin hitches



Type	for earth drills	with pin Ø (mm/in)	Operating weight (t/lbs)
<b>KM 501-15000MAX-25000MAX-44,5</b>	15000MAX - 25000MAX	44.5 / 1.75	8 - 22 / 17,600 - 48,400
<b>KM 501-15000MAX-25000MAX-45</b>	15000MAX - 25000MAX	45 / 1.77	8 - 22 / 17,600 - 48,400
<b>KM 501-15000MAX-25000MAX-50</b>	15000MAX - 25000MAX	50 / 1.97	8 - 22 / 17,600 - 48,400
<b>KM 501-15000MAX-25000MAX-55</b>	15000MAX - 25000MAX	55 / 2.17	8 - 22 / 17,600 - 48,400
<b>KM 501-15000MAX-25000MAX-60</b>	15000MAX - 25000MAX	60 / 2.36	8 - 22 / 17,600 - 48,400
<b>KM 501-15000MAX-25000MAX-65</b>	15000MAX - 25000MAX	65 / 2.56	8 - 22 / 17,600 - 48,400
<b>KM 501-15000MAX-25000MAX-70</b>	15000MAX - 25000MAX	70 / 2.76	8 - 22 / 17,600 - 48,400
<b>KM 501-15000MAX-25000MAX-75</b>	15000MAX - 25000MAX	75 / 2.95	8 - 22 / 17,600 - 48,400
<b>KM 501-15000MAX-25000MAX-80</b>	15000MAX - 25000MAX	80 / 3.15	8 - 22 / 17,600 - 48,400
<b>KM 501-35000MAX-65000MAX-60</b>	35000MAX - 65000MAX	60 / 2.36	20 - 45 / 44,000 - 96,800
<b>KM 501-35000MAX-65000MAX-65</b>	35000MAX - 65000MAX	65 / 2.56	20 - 45 / 44,000 - 96,800
<b>KM 501-35000MAX-65000MAX-70</b>	35000MAX - 65000MAX	70 / 2.76	20 - 45 / 44,000 - 96,800
<b>KM 501-35000MAX-65000MAX-75</b>	35000MAX - 65000MAX	75 / 2.95	20 - 45 / 44,000 - 96,800
<b>KM 501-35000MAX-65000MAX-80</b>	35000MAX - 65000MAX	80 / 3.15	20 - 45 / 44,000 - 96,800
<b>KM 501-35000MAX-65000MAX-90</b>	35000MAX - 65000MAX	90 / 3.54	20 - 45 / 44,000 - 96,800
<b>KM 501-35000MAX-65000MAX-100</b>	35000MAX - 65000MAX	100 / 3.94	20 - 45 / 44,000 - 96,800
<b>KM 501-35000MAX-65000MAX-110</b>	35000MAX - 65000MAX	110 / 4.33	20 - 45 / 44,000 - 96,800

## Cardan link with system L-Lock



Type	for earth drills	with adapter	Operating weight (t/lbs)
<b>KSW10-15000MAX</b>	15000MAX	KSW10	10 - 15 / 22,000 - 33,000
<b>KSW10-20000MAX</b>	20000MAX	KSW10	13 - 20 / 28,600 - 44,000
<b>KSW21-25000MAX</b>	25000MAX	KSW21/25	15 - 22 / 33,000 - 48,400
<b>KSW21-35000MAX</b>	35000MAX	KSW21/25	20 - 45 / 44,000 - 96,800
<b>KSW21-42000MAX</b>	42000MAX	KSW21/25	20 - 45 / 44,000 - 96,800
<b>KSW21-65000MAX</b>	65000MAX	KSW21/25	21 - 45 / 46,200 - 96,800

## Cradle hitch with system L-Lock



Type	for earth drills	with adapter	Operating weight (t/lbs)
<b>KSW10-15000MAX Cradle</b>	15000MAX	KSW10	10 - 15 / 22,000 - 33,000
<b>KSW10-20000MAX Cradle</b>	20000MAX	KSW10	13 - 20 / 28,600 - 44,000
<b>KSW21-25000MAX Cradle</b>	25000MAX	KSW21/25	15 - 22 / 33,000 - 48,400

## Lower part of hitch for specific solution



Type	for earth drills	Operating weight (t/lbs)
<b>KM 691-15000MAX-25000MAX</b>	15000MAX - 25000MAX	10 - 22 / 22,000 - 48,400
<b>KM 691-35000MAX-65000MAX</b>	35000MAX - 65000MAX	20 - 45 / 44,000 - 99,000

## Lower part of cradle hitch for specific solution



Type	for earth drills	Operating weight (t/lbs)
<b>KM 691-15000MAX Cradle</b>	15000MAX	10 - 15 / 22,000 - 33,000
<b>KM 691-20000MAX-25000MAX Cradle</b>	20000MAX - 25000MAX	13 - 22 / 28,600 - 48,400

## In-Site Monitor

The In-Site range of products are the must have tool to enable you to perform with the required accuracy, precision and efficiency across all your torque applications. With three variants, In-Site is perfect for operators in all environments to get the best possible performance from their drive units.

Data can be viewed in real-time, allowing immediate adjustments as required to help keep jobsites as problem free as possible. Data can also be viewed offline in an easy to use dashboard format to give that enhanced level of understanding.



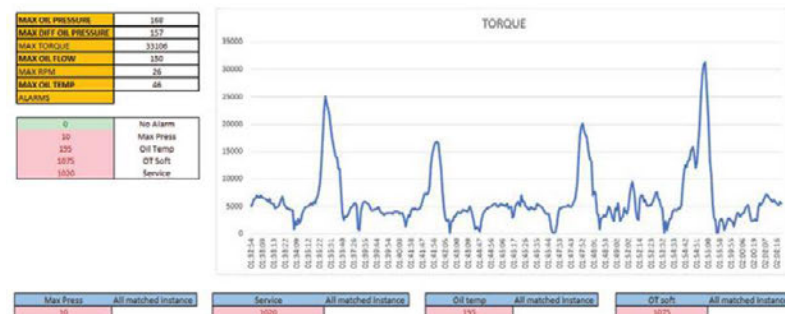
- ▷ Plug-and-Play
- ▷ Real time data analysis
- ▷ Wireless touch screen display
- ▷ Alignment monitor
- ▷ Pressure readouts
- ▷ Calculated torque value
- ▷ Internal oil temperature records
- ▷ Time and date stamp of data
- ▷ Unit switch from metric to imperial
- ▷ Servicing alarm
- ▷ Temperature alarm
- ▷ Total run time



### In-Site Monitor

Type	Alignment sensor	Pressure sensor	Flow sensor (mm)	Temperature sensor (mm)	Earth drill compatibility	Operating weight (t/lbs)
In-Site Align	✓	-	-	-	from X1500	> 1 / 2,200
In-Site Data	✓	✓	-	-	from X1500	> 1 / 2,200
In-Site Data Plus	✓	✓	500 x 325 / 19.7 x 12.8	320 x 310 / 12.6 x 12.2	from 20000MAX	> 13 / 28,600

### Example



## Mounting options for Earth Drills

### Single pin hitches



Type	With pin Ø (mm/in)	For earth drills
KM 501-35000MAX-65000MAX-60	60 / 2.36	35000MAX to 65000MAX
KM 501-35000MAX-65000MAX-65	65 / 2.56	35000MAX to 65000MAX
KM 501-35000MAX-65000MAX-70	70 / 2.76	35000MAX to 65000MAX
KM 501-35000MAX-65000MAX-75	75 / 2.95	35000MAX to 65000MAX
KM 501-35000MAX-65000MAX-80	80 / 3.15	35000MAX to 65000MAX
KM 501-35000MAX-65000MAX-90	90 / 3.54	35000MAX to 65000MAX
KM 501-35000MAX-65000MAX-100	100 / 3.94	35000MAX to 65000MAX
KM 501-35000MAX-65000MAX-110	110 / 4.33	35000MAX to 65000MAX

### Adapters for system L-Lock



Type	For earth drills	Adapter	Operating weight (t/lbs)
KSW21-35000MAX	35000MAX	KSW21/25	20 - 45 / 44,000 - 99,000
KSW21-42000MAX	42000MAX	KSW21/25	20 - 45 / 44,000 - 99,000
KSW21-65000MAX	65000MAX	KSW21/25	21 - 45 / 46,200 - 99,000

Request? exc@kinshofer.com