

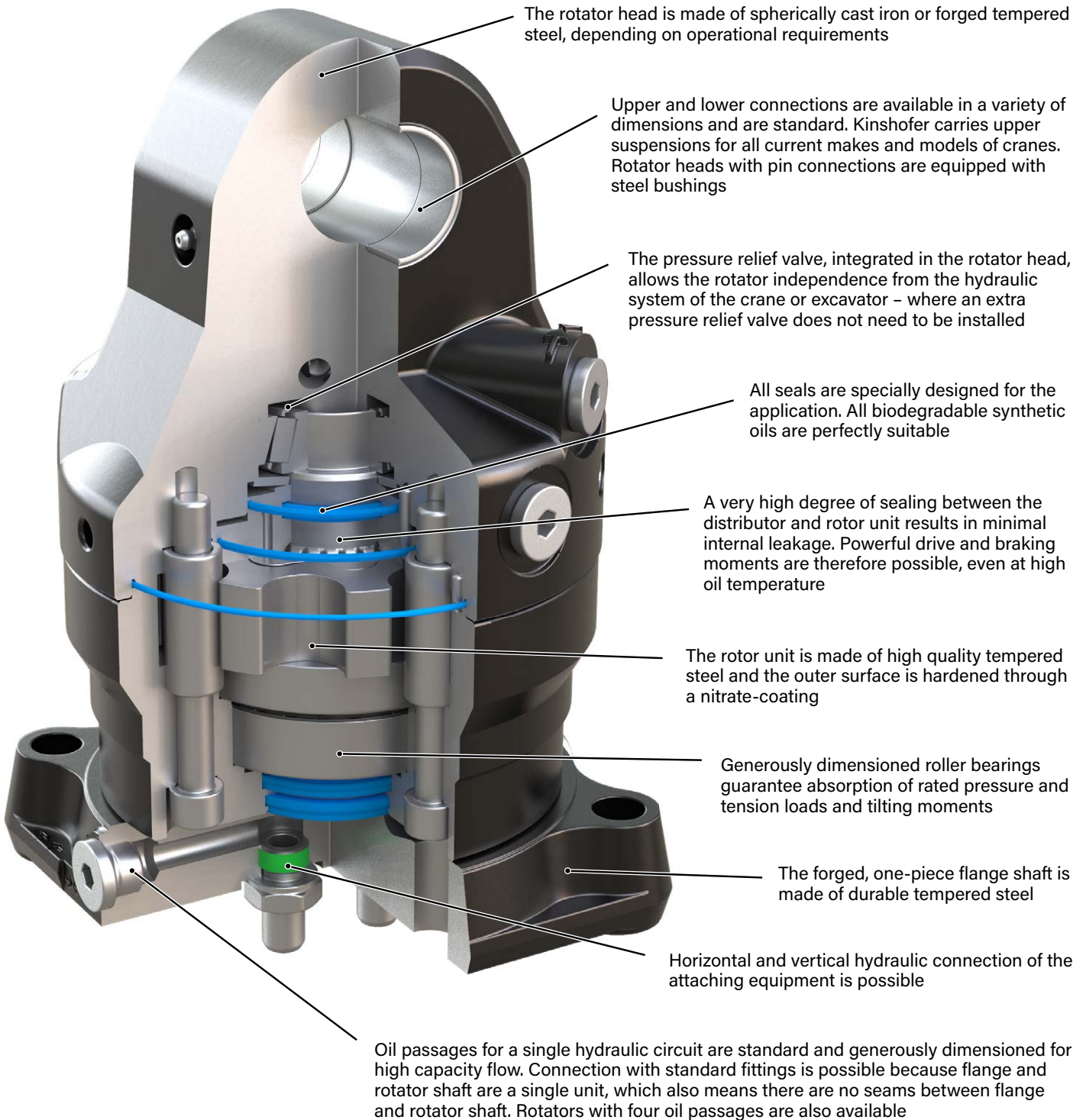
KINSHOFER Rotator Line

KINSHOFER manufactures rotators for truck loaders, excavators and logging operations. Years of experience in designing rotators and hydraulic load handling equipment guarantee high efficiency, long lasting rotators, specially tailored to meet your requirements. The gear-type design ensures a very compact and powerful rotator. The precision control and braking ability is especially appreciated by operators. A grapple does not rotate unexpectedly when digging, even under maximum load and there is no need for stability compensation when handling longer lengths of timber... these are only some of the many working situations where operators appreciate the advantages of using **KINSHOFER** rotators.

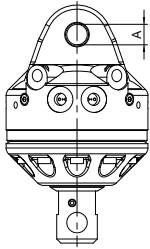
KINSHOFER-Rotators are the solution.



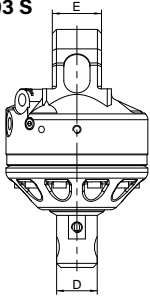
Features of the **KINSHOFER**-Rotators



Gear type rotator with shaft up to 6,600 lbs load capacity (incl. fittings)



KM 03 S



Type	Load capacity (lbs)	Shaft Ø D (in)	Upper connection (width E x pin-Ø A) (in)	Torque (ft.lbs)	Moment of deflection max. (ft.lbs)	Self weight (lbs)
KM 03 S*	6,600	1.95	2.36 x 0.98	332	1,290	53

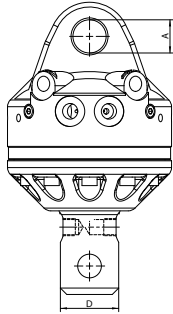
* only for pallet forks

Operating pressure rotate: max. 5,350 psi
Oil flow rotate: max. 10.5 GPM
Oil flow feedthrough: 20.0 GPM
Hydraulic coupling in: G 3/8"
Hydraulic coupling out: G 1/4"

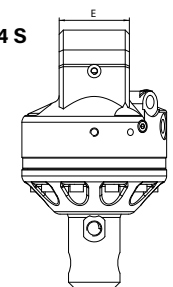


KM 03 S

Gear type rotator with shaft up to 9,900 lbs load capacity (incl. fittings)



KM 04 S



Type	Load capacity (lbs)	Shaft Ø D (in)	Upper connection (width E x pin-Ø A) (in)	Torque (ft.lbs)	Moment of deflection max. (ft.lbs)	Self weight (lbs)
KM 04 S59-30	9,900	2.32	3.3 x 1.2	627	2,213	57
KM 04 S	9,900	2.44	3.3 x 1.2	627	2,213	57
KM 04 S63-30	9,900	2.48	3.3 x 1.2	627	2,213	57
KM 04 S68-30	9,900	2.68	3.3 x 1.2	627	2,213	57
KM 04 S68-30US*	9,900	2.68	3.3 x 1.2	738	3,318	59
KM 04 S69-30	9,900	2.72	3.3 x 1.2	627	2,213	57

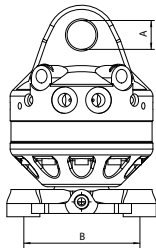
* steel motor-head

Operating pressure rotate: max. 5,350 psi
Oil flow rotate: max. 10.5 GPM
Oil flow feedthrough: 20.0 GPM
Hydraulic coupling: M18 x 1.5

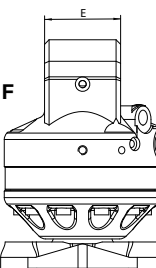


KM 04 S69-30

Gear type rotator with flange up to 9,900 lbs load capacity (incl. fittings)



KM 04 F



Type	Load capacity (lbs)	Hole pattern of flange B (in)	Upper connection (width E x pin-Ø A) (in)	Torque (ft.lbs)	Moment of deflection max. (ft.lbs)	Self weight (lbs)
KM 04 F	9,900	□ 5.5	3.3 x 1.2	627	2,213	57
KM 04 F140-30US*	9,900	□ 5.5	3.3 x 1.2	738	6,269	68
KM 04 F140-30V**	9,900	□ 5.5	3.3 x 1.2	627	2,213	57

* steel motor-head
 ** additional vertical connection

Operating pressure rotate: max. 5,350 psi
Oil flow rotate: max. 10.5 GPM
Oil flow feedthrough: 20.0 GPM
Hydraulic coupling: M18 x 1.5



KM 04 F



KM 04 F140-30US

Gear type rotator with shaft up to 13,200 lbs load capacity (incl. fittings)

Type	Load capacity (lbs)	Shaft Ø D (in)	Upper connection (width E x pin-Ø A) (in)	Torque (ft.lbs)	Moment of deflection max. (ft.lbs)	Self weight (lbs)
KM 06 S68-40	13,200	2.68	3.3 x 1.6	738	3,318	71



Operating pressure rotate: max. 5,350 psi
Oil flow rotate: max. 10.5 GPM
Oil flow feedthrough: max. 20.0 GPM
Hydraulic coupling in: G 1/2"
Hydraulic coupling out: M18 x 1.5

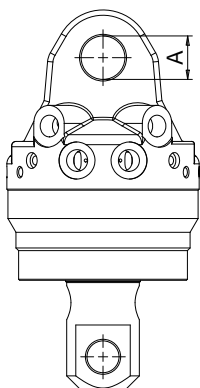
Gear type rotator with flange up to 13,200 lbs load capacity (incl. fittings)

Type	Load capacity (lbs)	Hole pattern of flange B (in)	Upper connection (width E x pin-Ø A) (in)	Torque (ft.lbs)	Moment of deflection max. (ft.lbs)	Self weight (lbs)
KM 06 F140-40	13,200	□ 5.5	3.3 x 1.6	738	6,269	75

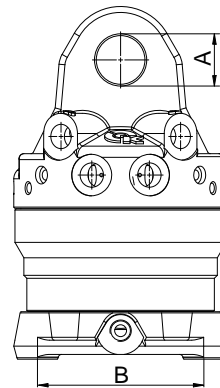
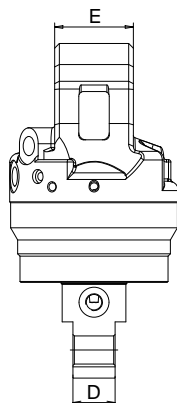


Operating pressure rotate: max. 5,350 psi
Oil flow rotate: max. 10.5 GPM
Oil flow feedthrough: max. 20.0 GPM
Hydraulic coupling in: G 1/2"
Hydraulic coupling out: M18 x 1.5

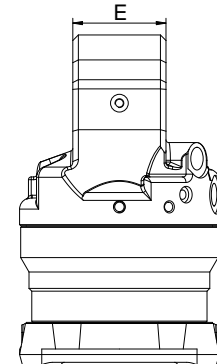
Technical drawings



KM 06 S68-40



KM 06 F140-40



Gear type rotator with flange and 4 oil ducts to operate 2 different functions (incl. fittings)

Type	Load capacity (lbs)	Hole pattern of flange B (in)	Upper connection (width E x pin-Ø A) (in)	Torque (ft.lbs)	Hydraulic couplings	Moment of deflection max. (ft.lbs)	Self weight (lbs)
KM 04 F140-30-4	9,900	□ 5.5	3.3 x 1.2	629	M 18 x 1.5	2,213	88
KM 06 F173-35-4	13,200	Ø 6.8	3.2 x 1.4	738	G 1/2"	6,269	99
KM 10 F173-35/2-4	22,000	Ø 6.8	3.2 x 1.4	1475	G 1/2" & G 3/4"	8,850	159



KM 06 F173-35-4

Operating pressure rotate: Oil flow rotate: Oil flow feedthrough:	KM 04 F / KM 06 F	KM 10 F
	max. 5,350 psi	max. 5,350 psi
	max. 10.5 GPM	max. 13.0 GPM
	max. 20.0 GPM	max. 20.0 GPM

Gear type rotator with flange for logging (incl. hose guard and fittings)

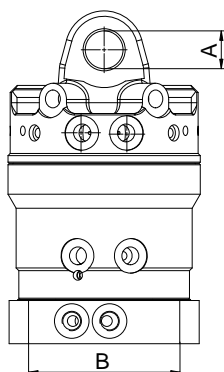
Type	Load capacity (lbs)	Hole pattern of flange B (in)	Upper connection (width E x pin-Ø A) (in)	Torque (ft.lbs)	Moment of deflection max. (ft.lbs)	Self weight (lbs)
KM 06 F173-35	13,200	Ø 6.8	3.2 x 1.4	738	6,269	75
KM 10 F173-35/1	22,000	Ø 6.8	3.2 x 1.4	1,475	8,850	136
KM 10 F173-35/2	22,000	Ø 6.8	3.2 x 1.4	1,475	8,850	143
KM 10 F173-45	22,000	Ø 6.8	3.9 x 1.8	1,475	8,850	150
KM 10 F173-52	22,000	Ø 6.8	5.4 x 2.1	1,475	8,850	154



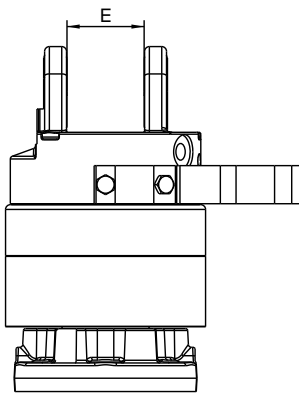
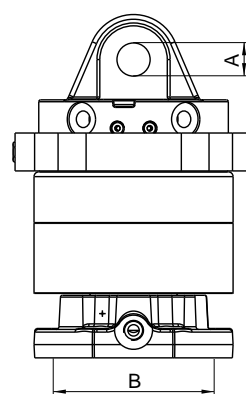
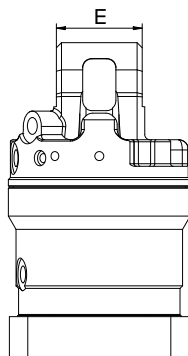
KM 10 F173-45

Operating pressure rotate: Oil flow rotate: Oil flow feedthrough: Hydraulic coupling:	KM 06 F	KM 10 F
	max. 5,350 psi	max. 5,350 psi
	max. 10.5 GPM	max. 13.0 GPM
	max. 20.0 GPM	max. 20.0 GPM
	G 1/2"	G 1/2"

Technical drawings



KM 04 F140-30-4



KM 10 F173-35/1

KM 501 - Upper suspension between rotator and crane



An upper suspension is a cardan link between rotator and crane. It is available for all current makes and models of cranes. Please specify dimensions when ordering.

Type	Load capacity (lbs)	Self weight (approx. lbs)
KM 501 3000	up to 6,600	11
KM 501 4500	up to 9,900	22
KM 501 6000	up to 13,200	33
KM 501 10000	up to 22,000	55

KM 511 - Upper suspension with pendulum damper between rotator and crane



A pendulum damper reduces the horizontal swing of the attachment. It can also be retrofitted to an existing upper suspension.

Type	Load capacity (lbs)	Self weight (approx. lbs)
KM 511 4500	up to 9,900	33
KM 511 6000	up to 13,200	44
KM 511 10000	up to 22,000	66

KM 206 - Hose guard



The hose guard is a metal bow to be attached onto the rotator. It is designed to protect the hoses of the rotator from damage i.e. from protruding branches

Type	Self weight (approx. lbs)
KM 206 hose guard for the rotator	7

KM 502 - Reduction link between rotator and grapple



A reduction link adapts a shaft type rotator to an attachment with a standard hole pattern for a flange.

Type	Load capacity (lbs)	Self weight (approx. lbs)
KM 502 3000	up to 6,600	4
KM 502 4500	up to 9,900	7
KM 502 6000	up to 13,200	9

Accessories for attaching pallet forks etc.



KM 460 03

Type	Description	Type of rotator	Weight (approx. lbs)
KM 460 03 KM 03 S	rigid suspension link with pin for all	KM 03	18
KM 460 03 KM 04 S	KINSHOFER shaft-type rotators	KM 04	22
KM 460 08 KM 03 S	rigid hook for all	KM 03	18
KM 460 08 KM 04 S	KINSHOFER shaft rotators	KM 04	20
KM 460 04 KM 04 S	non-rotating swinging hook for all	KM 04	26
KM 460 04 KM 06 S	KINSHOFER shaft rotators	KM 06	33
KM 460 10	non-rotating swinging hook for all KINSHOFER flange rotators	KM 10 F173 (KM 04 to KM 10)	55



KM 460 04