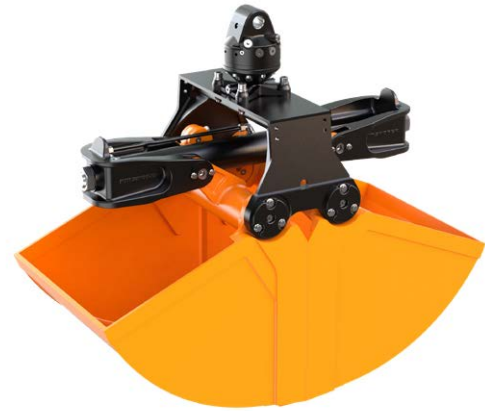


The rugged clamshell bucket KM 605 is recognized as successful synthesis of form, function and performance.

- ▷ **Maximum loading height** is achieved through the compact design with the horizontal hydraulic cylinder.
- ▷ **Long life is ensured** through the use of 500 HB steel in the manufacture of the cutting edges and a generously dimensioned bearing system.
- ▷ **Synchronized opening and closing** through sturdy compensation bar.
- ▷ **Bolt-on digging teeth** are delivered with each clamshell bucket.
- ▷ **Excellent digging characteristics** are a result of high closing forces (6,600 lbf at 3,750 psi operating pressure).
- ▷ **Also available as smaller version KM 604.**



### Packages clamshell bucket KM 605-250 c & KM 605-350 c

Type	Volume (c.y.)	Width E (in)	Opening max. (in)	Number of teeth	Self weight (lbs)	Closing force (lbf)	Load capacity (lbs)
KM 605-250 c	0.33	20	56	5	704	6,600	6,600
KM 605-350 c	0.46	26	56	5	759	6,600	6,600

**Package consists of:** clamshell bucket, bolt-on teeth, rotator KM 04 F, short connecting hoses KM 203 01, upper suspension KM 501 4500, non-return valve

### Clamshell bucket KM 605 incl. teeth

Type	Volume (c.y.)	Width E (in)	Opening max. (in)	Number of teeth	Self weight (lbs)	Closing force (lbf)	Load capacity (lbs)
KM 605-200	0.26	16	56	3	583	6,600	6,600
KM 605-250	0.33	20	56	5	627	6,600	6,600
KM 605-350	0.46	26	56	5	682	6,600	6,600
KM 605-450	0.59	32	56	9	748	6,600	6,600
KM 605-550	0.72	39	56	9	825	6,600	6,600
KM 605-650	0.85	47	56	9	902	6,600	6,600

### Accessories

Type	Description
KM 04 F	recommended KINSHOFER rotator for KM 605
KM 680 01	scraper
KM 685 06 hook set 2	welded hooks
KM 685 07 set	wear plates to protect horizontal cutting edges (2 pieces)

### Requirements of truck crane

**Operating pressure:** 3,750 - 4,600 psi  
**Recommended oil flow:** 6.5 - max. 20 GPM

### Technical drawings

